

**VALVULAS CHECK Y SHUTTLE**



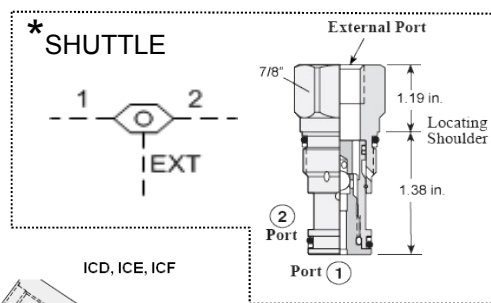
**LISTA DE PRECIOS**

## VALVULA CHECK EN LINEA

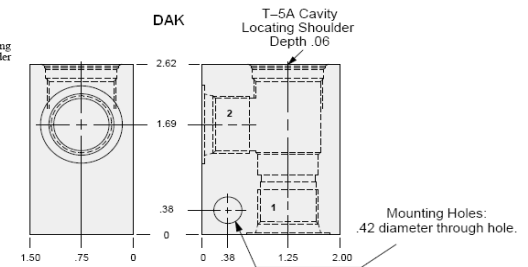
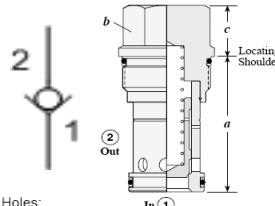
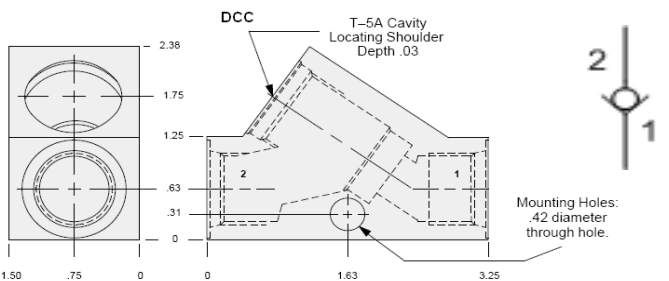
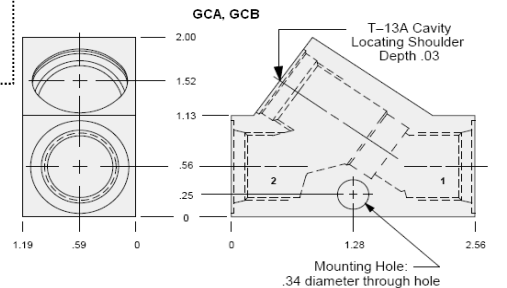
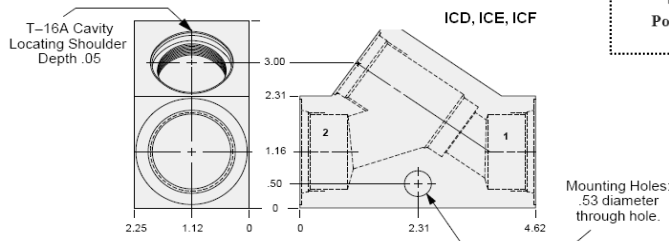


CODIGO	MODELO	GPM	PUERTOS	APERTURA PSI	PRESION PSI	PRECIO DOLARES
21-PA-050	C400S	5	1/4" NPT	5	5000	USD 82
21-PA-051	C600S	10	3/8" NPT			USD 97
21-PA-052	C800S	15	1/2" NPT			USD 112
21-PA-053	C1200S	30	3/4" NPT			USD 187
21-PA-054	C1600S	60	1" NPT			USD 375

**NOTA:** Para Apertura a 65 psi, Facturar con Código 21-PA-xxxA incrementando un 5% el precio

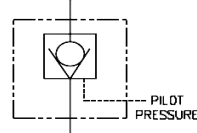


Typical Cartridge Model Code	Cartridge Dimensions		
	a	b	c
CXDA - XCN	1.38	7/8"	.75
CXFA - XCN	1.62	1 1/8"	.69
CXHA - XCN	2.44	1 1/4"	.97

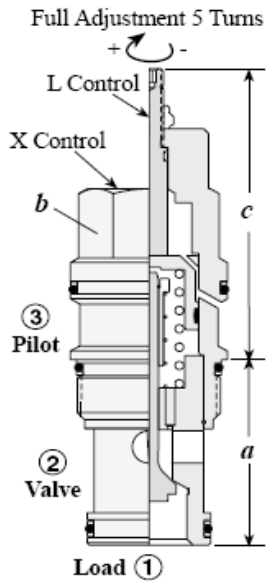


CODIGO	MODELO	GPM	CAVIDAD	PUERTOS	APERTURA PSI	PRESION PSI	PRECIO DOLARES
G-SH-055-222	CXDA-XAN-GCA	5	T-13A	1/4" NPT	4	3000	USD 105
G-SH-055-207	CXDA-XAN-GCB	10		3/8" NPT			USD 105
G-SH-057-204	CXFA-XAN-DCC	15		1/2" NPT			USD 146
G-SH-057-200	CXFA-XAN-DAK	15	T-5A	SAE 10	USD 140		
G-SH-058-204	CXFA-XEN-DCC			1/2" NPT	USD 156		
G-SH-058-200	CXFA-XEN-DAK			SAE 10	USD 151		
G-SH-059-210	CXHA-XAN-ICD	30	T-16A	3/4" NPT	4	USD 341	
G-SH-059-211	CXHA-XAN-ICE	60		1" NPT		USD 341	
G-SH-059-212	CXHA-XAN-ICF	80		1 1/4" NPT		USD 341	
G-SH-060-210	CXHA-XEN-ICD	30		3/4" NPT	75	USD 341	
G-SH-060-211	CXHA-XEN-ICE	60		1" NPT		USD 341	
G-SH-060-212	CXHA-XEN-ICF	80		1 1/4" NPT		USD 341	
* G-SH-076-222	CSAA-EXN-GCA	5	T-13A	1/4" NPT		3000	USD 132

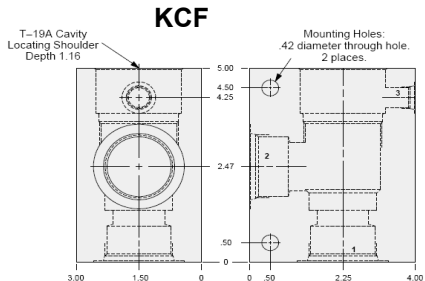
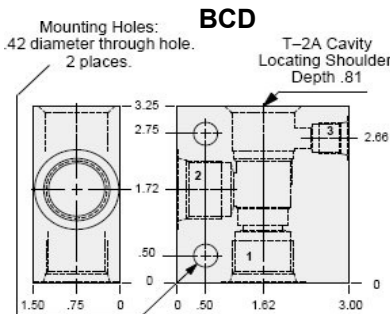
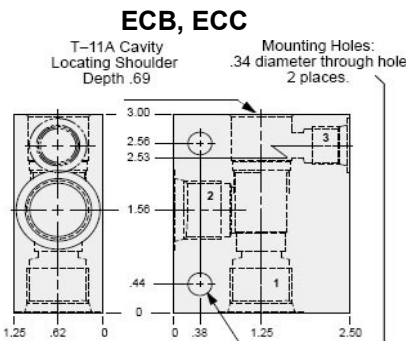
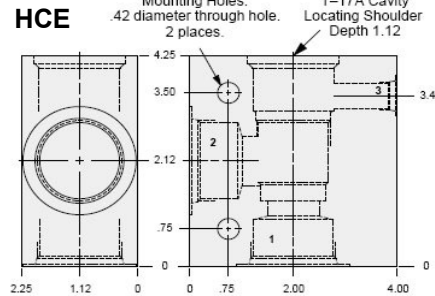
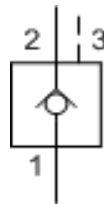
# VALVULA CHECK PILOTADA EN LINEA



CODIGO	MODELO	PUERTOS NPT	GPM	AJUSTE PSI	PRECIO DOLARES
21-P-046	RD-1650	1/2"	15	3000	USD 265

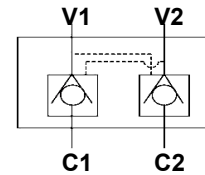


Typical Cartridge Model Code	Cartridge Dimensions			
	a	b	c	L
CKCB - XCN	1.38	7/8"	1.19	2.50
CKEB - XCN	1.38	1 1/8"	1.38	2.81
CKGB - XCN	1.81	1 1/4"	1.81	3.28
CKIB - XCN	2.50	1 5/8"	2.31	3.94



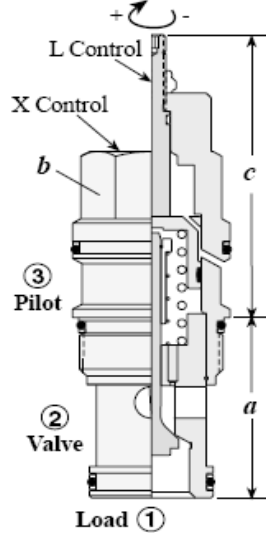
CODIGO	MODELO	GPM	CAVIDAD	PUERTOS	PSI MAX	PRECIO DOLARES
G-SH-063-205	CKCB-XAN-ECB	10	T-11A	3/8" NPT	3000	USD 145
G-SH-063-206	CKCB-XAN-ECC	15		1/2" NPT		USD 145
G-SH-065-223	CKEB-XAN-BCD	30	T-2A	3/4" NPT		USD 220
G-SH-061-209	CKGB-XCN-HCE	60	T-17A	1" NPT		USD 474
G-SH-062-213	CKIB-XCN-KCF	120	T-19A	1 1/4" NPT		USD 827

# VALVULA CHECK PILOTADA DOBLE EN LINEA



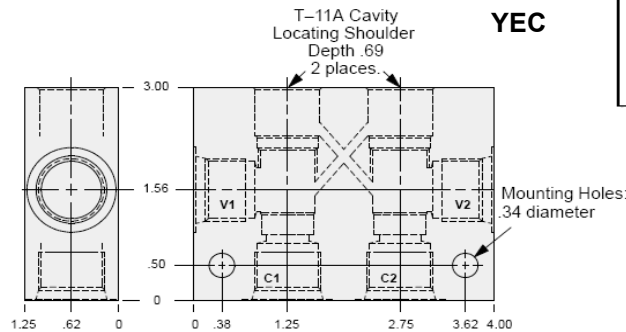
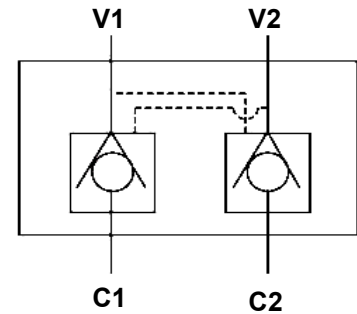
CODIGO	MODELO	PUERTOS NPT	GPM	AJUSTE PSI	PRECIO DOLARES
21-P-045	RD-1475	3/4"	30	3000	USD 311
21-P-045A	RD-1450	1/2"	15	3000	USD 311

Full Adjustment 5 Turns

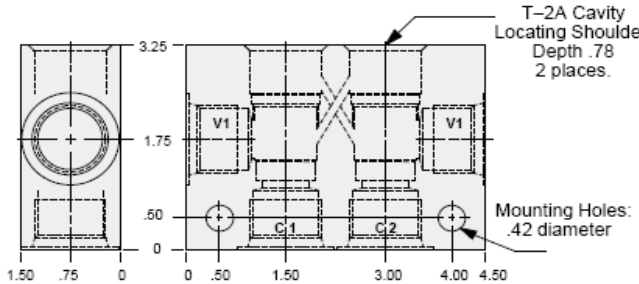


*Cartridge Dimensions*

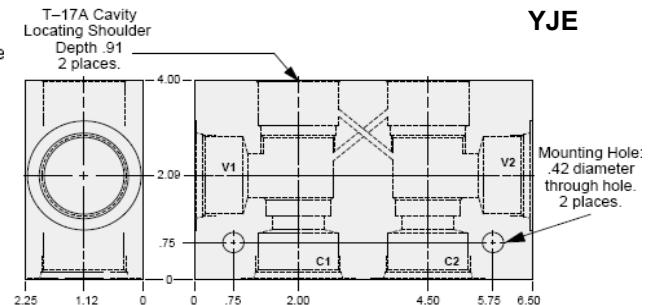
Typical Cartridge Model Code	a	b	c	
			X,B,E,P	L
CKCB - XCN	1.38	7/8"	1.19	2.50
CKEB - XCN	1.38	1 1/8"	1.38	2.81
CKGB - XCN	1.81	1 1/4"	1.81	3.28
CKIB - XCN	2.50	1 5/8"	2.31	3.94



**YAD**



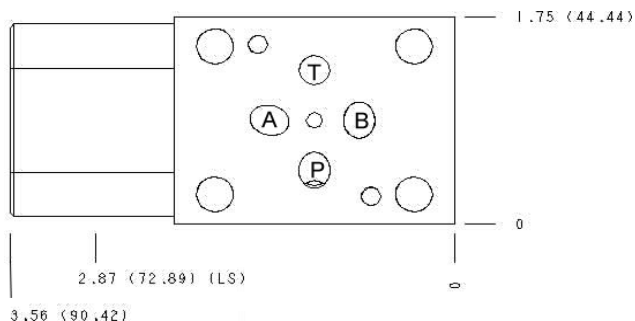
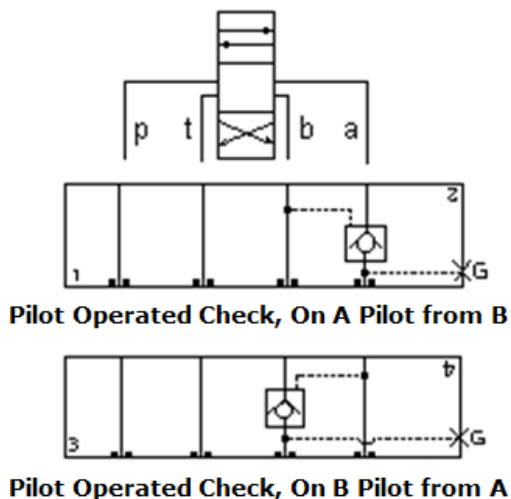
**YJE**



CODIGO	MODELO	GPM	CAVIDAD	PUERTOS	PSI MAX	PRECIO DOLARES
G-SH-063-063-217	CKCB-XAN-YEC	15	T-11A	1/2" NPT	3000	USD 280
G-SH-065-065-216	CKEB-XAN-YAD	30	T-2A	3/4" NPT		USD 408
G-SH-061-061-218	CKGB-XCN-YJE	60	T-17A	1" NPT		USD 874

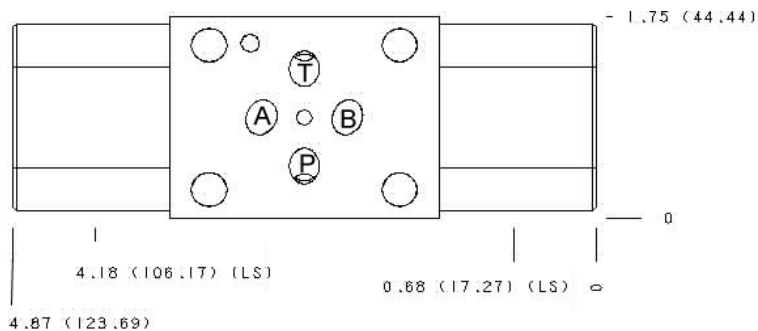
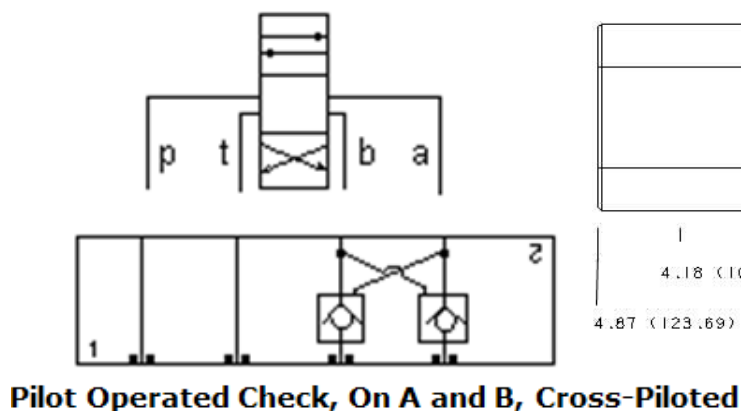
## VALVULA MODULAR CETOP 3

### VALVULA CHECK PILOTADA



CODIGO	MODELO	GPM	CAVIDAD	CONTROL	APERTURA PSI	PRESION PSI	PRECIO DOLARES
G-SH-063-305	CKCB-XAN-EBA	10	T-11A	En A Pilotado por B	4	3000	USD 251
G-SH-064-305	CKCB-XCN-EBA			o En B Pilotado por A	30		USD 245

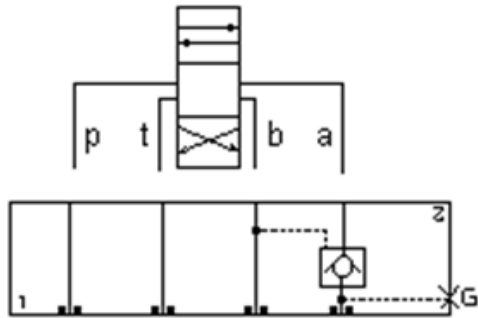
### VALVULA CHECK PILOTADA DOBLE



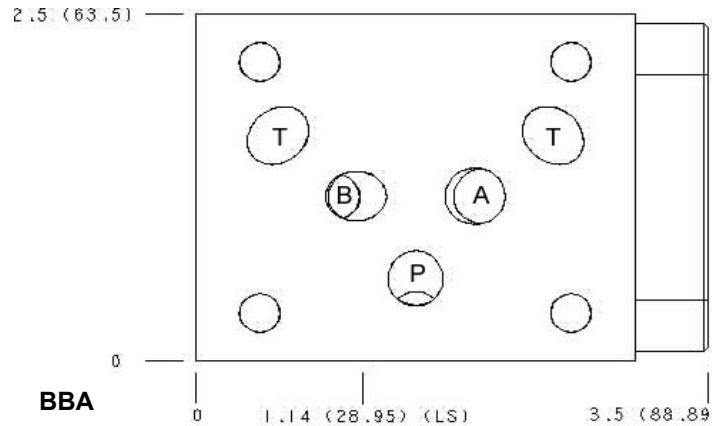
CODIGO	MODELO	GPM	CAVIDAD	CONTROL	APERTURA PSI	PRESION PSI	PRECIO DOLARES
G-SH-063-063-306	CKCB-XAN-EBY	10	T-11A	En A y B	4	3000	USD 449
G-SH-064-064-306	CKCB-XCN-EBY			Piloto Cruzado	30		USD 437

## VALVULA MODULAR CETOP 5

### VALVULA CHECK PILOTADA

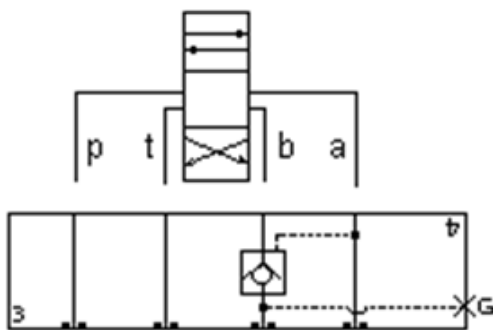


**Pilot Operated Check, On A Pilot from B**

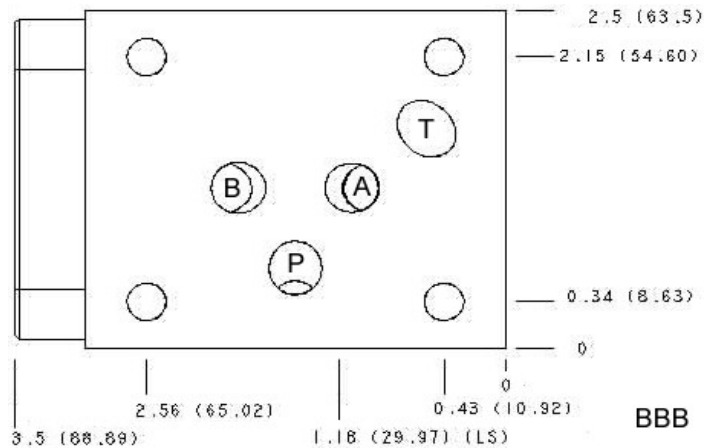


**BBA**

CODIGO	MODELO	GPM	CAVIDAD	CONTROL	APERTURA PSI	PRESION PSI	PRECIO DOLARES
G-SH-065-300	CKEB-XAN-BBA	20	T-2A	En A	4	3000	USD 335
G-SH-066-300	CKEB-XCN-BBA			Piloto Desde B	30		USD 346



**Pilot Operated Check, On B Pilot from A**



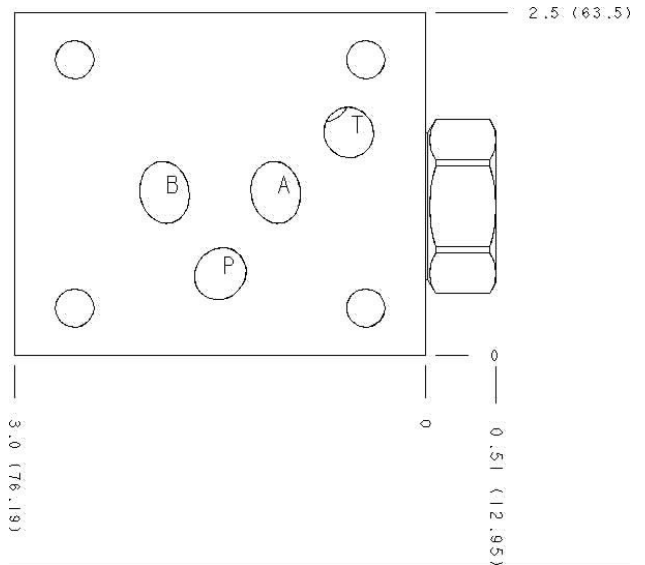
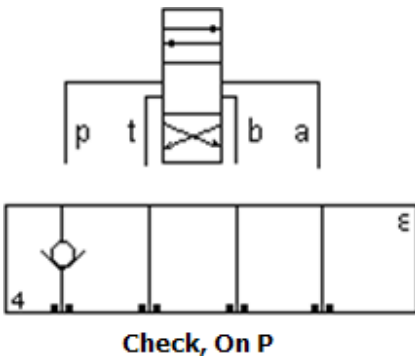
**BBB**

CODIGO	MODELO	GPM	CAVIDAD	CONTROL	APERTURA PSI	PRESION PSI	PRECIO DOLARES
G-SH-065-301	CKEB-XAN-BBB	20	T-2A	En B	4	3000	USD 335
G-SH-066-301	CKEB-XCN-BBB			Piloto Desde A	30		USD 346

## VALVULA MODULAR CETOP 5

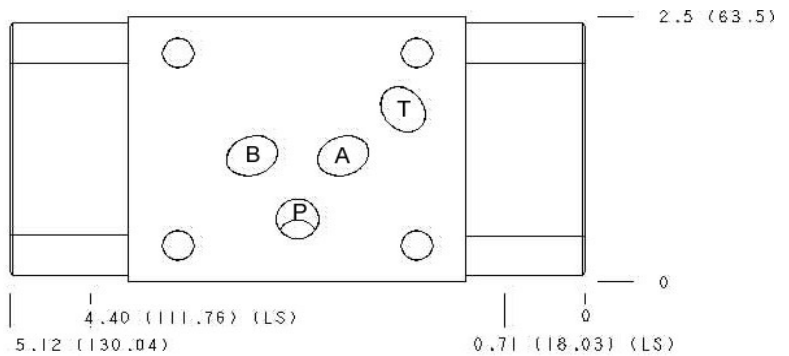
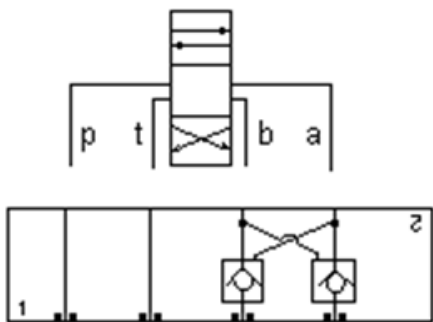
### VALVULA CHECK

#### VALVULA CHECK



CODIGO	MODELO	GPM	CAVIDAD	CONTROL	APERTURA PSI	PRESION PSI	PRECIO DOLARES
G-SH-057-310	CXFA-XAN-DBP	40	T-5A	En P	4	3000	USD 271

#### VALVULA CHECK PILOTADA DOBLE



**Pilot Operated Check, On A and B, Cross-Piloted**

CODIGO	MODELO	GPM	CAVIDAD	CONTROL	APERTURA PSI	PRESION PSI	PRECIO DOLARES
G-SH-065-065-302	CKEB-XAN-BBY	20	T-2A	En A y B	4	3000	USD 620
G-SH-066-066-302	CKEB-XCN-BBY			Piloto Cruzado	30	3000	USD 641